



SPOTTED LANTERNFLY SMASH-A-THON



How many you can you smash?

October 7 thru 31 ~ Weekly Awards

What are these bugs?

Spotted Lanternflies are invasive plant hopping insects that are damaging many plants in southeastern PA including economically important crops like fruit, tress, grapevines, hops, hardwoods and ornamentals. It's time SMASH them! Don't worry, they do not sting.



to

Adult SLF

What you can do:

- Stop the spread of SLF by checking your car and any outdoor equipment for the flies and their egg masses
- Smash living Spotted Lanternflies on site. They are 1" long and
- Scrape egg masses with a plastic card or putty knife into a bag filled with hand sanitizer or isopropyl alcohol. Each egg mass contains 30-50 eggs.
- Treating or removing their favored host, the Tree of Heaven.



Egg Mass

Note: There are many guidelines to removal, please see our website for more information,. If you just cut them down, they'll come back ten fold!

Smash Campaign Rules:

We will be "crowning" Lanternfly Smashing Champions each week with the coveted Gold, Silver, and Bronze Swatters! To enter, simply tally up your totals using the attached Tally Sheet and submit each Monday by 10am to mhundt@willistown.pa.us. Winners will be posted on the Willistown FB page and emailed.

We want this to be fun, educational, and beneficial for the environment! Send us pictures and we'll share with fellow SLF smashers! Email Mary at mhundt@willistown.pa.us or post to FB or Instagram with #WillistownSLFSmash and #SLFSmashCampaign **Let's get smashing!**



SPOTTED LANTERNFLY SMASH-A-THON



How many you can you smash?
October 7 thru 31 ~ Weekly Awards

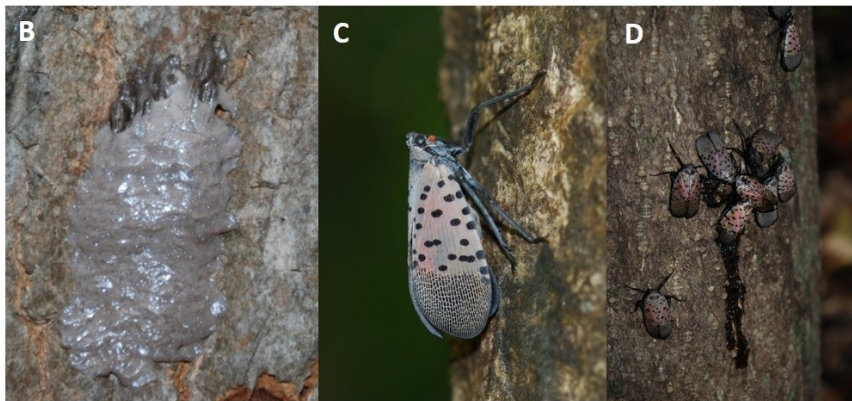


Photo courtesy: Lawrence Barringer,
Pennsylvania Department of Agriculture

- A. 1st-4th instar nymphs and adult female with wings spread out
- B. Egg masses in oothecae (egg cases) covered in a waxy deposit
- C. Lateral view of a resting adult
- D. Adult congregation on a tree trunk and plant sap oozing from damaged area

Life Stages of the Spotted Lanternfly

There is one generation of SLF per year.

The eggs are laid in late fall and hatch in the spring. Scraping them off in the fall limits next years hatch.

Egg masses are laid on hard surfaces (trees, decks, houses, outdoor equipment, rocks, etc.) and protected with a mud-like covering.

Each egg mass contains 30-50 eggs.

After hatching and before reaching adulthood, SLF goes through four nymph stages.

Adults emerge in July and are active until winter.

Only the adults can fly, but adults jump more than fly, their wings often remain closed.

